



# EASEBOURNE C.E. PRIMARY SCHOOL NEWSLETTER

7<sup>th</sup> February 2020

## Dates for the next 2 weeks

<b>Monday 10<sup>th</sup> February</b>	SENDCo Drop In	<b>8.30-10.00</b>
<b>Thursday 13<sup>th</sup> February</b>	Last Forest School for Badgers Class	<b>am/pm</b>
<b>Friday 14<sup>th</sup> February</b>	<b>INSET Day</b>	
<b>Monday 17<sup>th</sup> February – Friday 21<sup>st</sup> February</b>	<b>Half term</b>	
<b>Monday 24<sup>th</sup> February – Sunday 8<sup>th</sup> March</b>	Fair Trade Fortnight	
<b>Monday 24<sup>th</sup> February</b>	Parent Consultation Evening – All Classes	<b>2.45-6.30</b>
<b>Tuesday 25<sup>th</sup> February</b>	Otters Class Trip to Fishbourne Roman Palace	<b>9.00-3.00</b>
<b>Thursday 27<sup>th</sup> February</b>	Forest School starts for Rabbits Class Parent Consultation Evening – All Classes	<b>am/pm 2.45-5.30</b>
<b>Friday 28<sup>th</sup> February</b>	Debate Club (KS2)	<b>3.15-4.15</b>

## A word from the Head

### Staff News

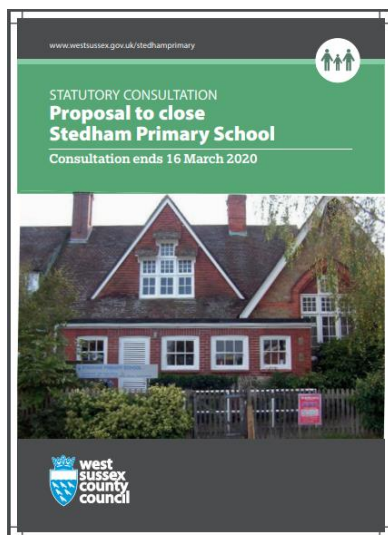
Many congratulations to Tanya Payne and her husband Joe, on the early arrival, last Sunday, of little Dorothy Amelia. All are doing well..

Congratulations also goes to Kim Ford who had a baby boy Josh Marc on Tuesday. We send them all our best wishes.



This week, we welcomed Mr Lee McGarrigal who will be teaching Rabbits Class during Mrs Payne's maternity leave. Lee has been able to start earlier than planned and has come in for two days this week and will also be in for two days next week before starting full-time after half-term.

## Proposal to Close Stedham Primary School



Many of you will know that Stedham Primary School is one of the local, West Sussex, small schools whose futures are currently being consulted on. The Statutory Consultation on Stedham has gone live and will run for a total of six weeks until 16<sup>th</sup> March.

It can be accessed via the following link:

[www.westsussex.gov.uk/stedhamprimary](http://www.westsussex.gov.uk/stedhamprimary)

Stedham Primary School is one of our partner schools in the Rother Valley locality and is, of course, the school where our deputy headteacher, Malcolm Meaby, has been seconded as headteacher. As part of the consultation, members of the wider community are being asked for their views. There is no doubt that village primary schools plays a significant role within their communities and that the closure of Stedham's school would impoverish both the village and the locality of schools to which it belongs. I would urge parents to make their voices heard, using the online survey (see link below). West Sussex County

Council will take all views into account in considering their final decision on the future of the school.

<https://haveyoursay.westsussex.gov.uk/strategic-planning-and-place/stedham-primary-school/>

Before you do have your say', however, you might want to read some of the related documents found at the bottom of the page.

Parents can also attend a Public Meeting to be held at Midhurst Rother College on Thursday, 13th Feb 2020 from 18:30 to 20:00. Local residents will be able to put their questions at the meeting to Council officers. This consultation threatens to significantly affect the educational provision in and around Midhurst and a strong turnout would send a clear message to West Sussex County Council that local people feel deeply about this decision.

**Have Your Say**  
On-line survey >

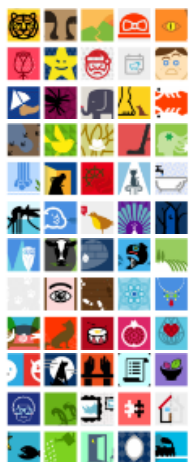
**Events**  
Public Meeting to be held at Midhurst Rother College  
From 13 Feb 2020 at 18:30 to 13 Feb 2020 at 20:00 [Add to my Calendar \(iCal\)](#)  
[More Information](#)

**Related**  
[School Effectiveness Strategy 2019-2022](#)  
43.9KB (PDF document)  
[Frequently Asked Questions - Stedham Primary School](#)  
136.3KB (PDF document)  
[Statutory Consultation - Proposal to close Stedham Primary School](#)  
1006.7KB (PDF document)

## School Council Update

Last term, the School Council, working with Anne Nixon, considered bullying and produced a poster which is now being enlarged to display around the school. As well as looking at bullying, they looked at our school uniform policy and reviewed and adjusted what 'accessories' they felt were appropriate. I have looked at their suggestions and am happy to adopt them and they are being added to our school uniform guidance. I would be grateful if parents could read through these so that they can check what is and isn't allowed.

- No tattoos, nail varnish, necklaces, bracelets or rings should be worn, unless permitted on special occasions
- Watches and/or small stud earrings are the only jewellery to be worn. In PE, watches should be removed and earrings should be taped.
- No big hair accessories should be worn and hair should not be shaved or have shapes, including straight or squiggly lines, cut into it.



There are three mornings after half-term when I hope to video KS2 children (that's Rabbits Class up to Otters Class) reciting a poem from the **MIX IT UP** selection on the Poetry by Heart website. You can find them at

<http://www.poetrybyheart.org.uk/> – look for this icon:



POETRY BY  
HEART

There are lots of great poems to discover like The Sleepy Giant by Charles E. Carryl and 'Please do not feed the animals...' by Robert Hull.

Planned video recording mornings: 25<sup>th</sup> and 26<sup>th</sup> February and 3<sup>rd</sup> March

## Fairtrade House Challenge (Monday 24<sup>th</sup> February – Sunday 8<sup>th</sup> March)



We will be celebrating Fairtrade Fortnight again this year. In the two weeks after half-term, each house will be collecting the packaging from fairtrade items to find out just how many different items it is now possible to buy fairly traded. So, children are encouraged to bring in any packaging they find at home to boost their house score. There will be a point for each different line represented, e.g. sugar, chocolate, banana. PLEASE make sure that the packaging is empty and try to keep the fairtrade mark intact. Hopefully, by the end of the fortnight, children will see just how wide the range of items is becoming. We also hope to run two Wednesday Fairtrade Stalls after school (26<sup>th</sup> February and 4<sup>th</sup> March) with affordable fairtrade items for sale.

## Parent Workshop

A big thank you to those parent who attended our first parent/teacher working party. The informal coffee morning led to conversations about parent/teacher expectations of learning, ways to improve parent/teacher communication and ideas to enable children to see that learning is for life (it does not

just happen at school). Some suggests were centred around more opportunities for parents to support in the classroom, more help for parents on a weekly basis to know how to support their child at home and more opportunities for year group parents to build relationships and support networks.

Many thanks again, for your continuing support

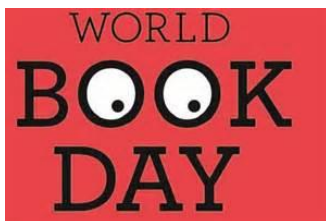
### Parent Consultation Evening

We have arranged two consultation evenings when you can discuss your child's progress with their class teacher. They will be on:

Monday 24<sup>th</sup> February - 2.45-6.30pm and Thursday 27<sup>th</sup> February - 2.45-5.30pm

This week you should have received a link to your mobile phone and email address which takes you to our online booking system where you can select a time convenient to you. If you did not receive this, or need help booking an appointment, please contact the school office.

Mrs Gemma Ralph, our Special Educational Needs Coordinator, will also be available on both days. If you would normally meet with the SENDCo, you can request a joint meeting with your child's class teacher by adding a note to your booking.



### World Book Week – Thursday 5<sup>th</sup> March

On World Book Day, children are invited to come to school dressed as their favourite book character. In the afternoon the children will have the opportunity to hear staff read their favourite book. We will also be looking to test the children's ingenuity in creating characters from children's books to add a new generation of colourful exhibits to the library and encourage children to get creative over half-term!

### Chartwells 'Back To School Menu'

On Monday 24<sup>th</sup> and Tuesday 25<sup>th</sup> February we will be on a 'Back to School Menu'. This will consist of:

Day 1 – Jacket potato with a choice of cheese or tuna mayo

Day 2 - Jacket potato with a choice of sausage and baked beans or cheese

Sweetcorn and beetroot salad

Peach slices with custard

Milk or water

### TIGHT WRITE

Congratulations to Scarlett (Y2), Max G (Y2), Oscar (Y4), Ruby L (Y4) and Jessica (Y4) on their winning entries for Tight Write 20. Entries in for the next Tight Write should be in for Thursday, 27<sup>th</sup> February.

**TIGHT WRITE 21**  


Using no more than  
**50 WORDS**  
can you write about this image?

Named entries to Mr Culley  
by Thursday, 27<sup>th</sup> February at the latest  
Prizes to be won!

## House Update

### House Fundraising

#### Blue House

Today, Blue House held a Film Night to raise funds for Macmillan Cancer Research. The event was well supported and we will let you know how much we raised in the next Newsletter. By Martha and Rufus - Blue House Captains

#### Green House

We would like to invite you all to a family bingo event on Friday 20<sup>th</sup> March from 3.15pm. This event is to raise money for Blue Cross, which is a fantastic charity helping animals in need. More information to follow soon, but please keep this date free and come and join us at this fun family event. By William and Ryan - Green House Captains

### Red House

We will be holding a Cake Sale on Friday, March 27<sup>th</sup> to raise funds for The Elizabeth Foundation for Deaf Children. More details to follow. Phebe and Rhys – Red House Captains

### Yellow House

We will be holding an Easter Raffle during the week beginning 30<sup>th</sup> March which will be drawn later that week. We will be selling tickets for £1.00 a strip (5). We do not want this event to be just about chocolate. Therefore, if you would like to support our fundraising for the RSPCA, we would be really grateful for any donations of Easter activity kits, sticker books etc and of course a few chocolate eggs would also be great. Thank You. By Ellie and Jacob – Yellow House Captains

	Green	Yellow	Blue	Red
<b>Total from Autumn Term</b>	<b>173</b>	<b>138</b>	<b>161</b>	<b>143</b>
<b>Week 1 House Points</b>	<b>4</b>	<b>2</b>	<b>4</b>	<b>1</b>
<b>Week 2 House Points</b>	<b>4</b>	<b>2</b>	<b>1</b>	<b>4</b>
<b>Week 3 House Points</b>	<b>4</b>	<b>1</b>	<b>3</b>	<b>2</b>
<b>Week 4 House Points</b>	<b>3</b>	<b>3</b>	<b>1</b>	<b>4</b>
<b>Week 5 House Points</b>	<b>3</b>	<b>1</b>	<b>2</b>	<b>4</b>
<b>Total</b>	<b>191</b>	<b>147</b>	<b>172</b>	<b>158</b>

## Coronavirus – Advice from HM Government

The government is closely monitoring the spread of the Coronavirus and is taking action at home and abroad.

The overall risk of Coronavirus to the UK remains moderate. However we understand that people may be concerned where there are children, students or staff returning from or visiting China.

Public Health England and the Foreign Office have issued advice for anyone travelling to the area. This can be found at:

- <https://www.gov.uk/foreign-travel-advice/china>
- <https://www.gov.uk/government/news/wuhan-novel-coronavirus-and-avian-flu-advice-for-travel-to-china>

Latest information and advice can also be found at:

- <https://www.gov.uk/coronavirus>

### Advice for parents/guardians

You should not be unduly worried about the possibility of your children catching the Coronavirus.

There is no reason why your children should not continue to attend their early years, school or further education setting as normal.

We recognise that some families or children may be planning to travel to China during the forthcoming half term period. If so, please refer to the FCO's latest travel advice via the link above.

What action you can take -

A UK wide campaign has been launched to provide clear advice on how to slow the spread of Coronavirus.

Please help to support the campaign which promotes basic hygiene practices, such as regularly washing hands and always sneezing into a tissue, to stem the spread of viruses.

# CORONAVIRUS: PUBLIC INFORMATION

The Government and NHS are well prepared to deal with this virus.

You can help too.

Germs can live on some surfaces for hours.

To protect yourself and others:

- Always carry tissues with you and use them to catch your cough or sneeze.
- Bin the tissue, and to kill the germs, wash your hands with soap and water, or use a sanitiser gel.
- If you have arrived back from China within 14 days follow the specific advice for returning travellers.

This is the best way to slow the spread of almost any germs, including Coronavirus.

Find out more at [gov.uk/coronavirus](https://gov.uk/coronavirus)

Sharing DHSC content from the following social media links:

- <https://twitter.com/DHSCgovuk/status/1223888531262726144>
- <https://www.facebook.com/DHSCgovuk/videos/194227541968649/>
- [https://www.linkedin.com/posts/dhsc\\_coronavirus-coronavirusoutbreak-coronavirusuk-activity-6629655670331318273-Djpu](https://www.linkedin.com/posts/dhsc_coronavirus-coronavirusoutbreak-coronavirusuk-activity-6629655670331318273-Djpu)

## EASEBOURNE PTFA NEWS

Our next PTFA Film Night is **Friday 6<sup>th</sup> March 2020, 3.15pm-5.20pm**. This event is for all children of Easebourne Primary School, Reception Class through to Year 6 only. Unfortunately, we do not have the adult-child ratio to include children from nursery, however if you would like to help on the day and have a younger sibling they are more than welcome to come with you but will be your responsibility throughout.

Tickets will go on sale Monday 2nd March at a price of £2.50 per child, price includes a bag of popcorn and a drink. In order to reduce our plastic waste, the children will now be using their classroom water bottles, which we will fill with apple & blackcurrant or orange squash. Please note tickets **will not** be on sale after 4.15pm on Thursday 5<sup>th</sup> March, this is so we have a more accurate idea of child:adult ratios and numbers for catering.

Please pop a signed form (these will go out in book bags during the first week back after half term) along with the money in a named envelope into the post box at the school office from Monday 2<sup>nd</sup> March. Children are more than welcome to bring their pyjamas or a change of clothes, pillows, blankets, beanbags etc... but bear in mind they need to be able to carry what they bring. They love to wear onesies, but we advise against them as the hall gets very hot. Please can you inform the school office if someone else other than yourselves are collecting your child/children after the event.



The film this time is '**Angry Birds 2**' rated (PG) Parental Guidance. Please read below the main description of 'PG' if you would like to read the whole content please go to [www.BBFC.co.uk](http://www.BBFC.co.uk) (British Board of Film Classification).

*'General viewing, but some scenes may be unsuitable for young children. A PG film should not unsettle a child aged around eight or older. Unaccompanied children of any age may watch, but parents are advised to consider whether the content may upset younger, or more sensitive, children.'*

With any event we will need volunteers to help beforehand, during the film and cleaning up afterwards. **If you are able to help in any way please contact the school office on 01730 813266, on facebook 'Easebourne Primary School PTFA' or Ruth James, Jo Purser or Vicky Barrett by email on [pta@easebourne.w-sussex.sch.uk](mailto:pta@easebourne.w-sussex.sch.uk)**

Many thanks for your continued support.

#### DATES FOR YOUR DIARY

Friday 6 March 3.30

Friday 6 March 4.00

Thursday 2 April

Wednesday 13 May tbc

Friday 15 May 3.30

Friday 5 June

Saturday 27 June

PTFA Film Night

PTFA Meeting with childcare!

Easter Egg Hunt

PTFA Meeting

Film Night

Tops for Tombola

Summer Fair

## COMMUNITY NEWS



Midhurst Rother College  
The best in everyone™  
Part of United Learning

# Community Day

## Saturday 25 April 2020



### Let's keep it LOCAL

Calling all local businesses, agencies and groups



Would you like to:

- share your skills
- demonstrate your craft
- and/or
- advertise your business

Engage with the local community and show what's on offer on it's doorstep

**ALL STAND & EXHIBITION SPACE  
FREE OF CHARGE**

For more information email: [madeline.hathaway@mrc-academy.org](mailto:madeline.hathaway@mrc-academy.org)

or contact the College Office on:



**01730  
812451**

**10am-2pm**



BE A PART OF THIS WELL-ESTABLISHED AND MUCH ANTICIPATED EVENT